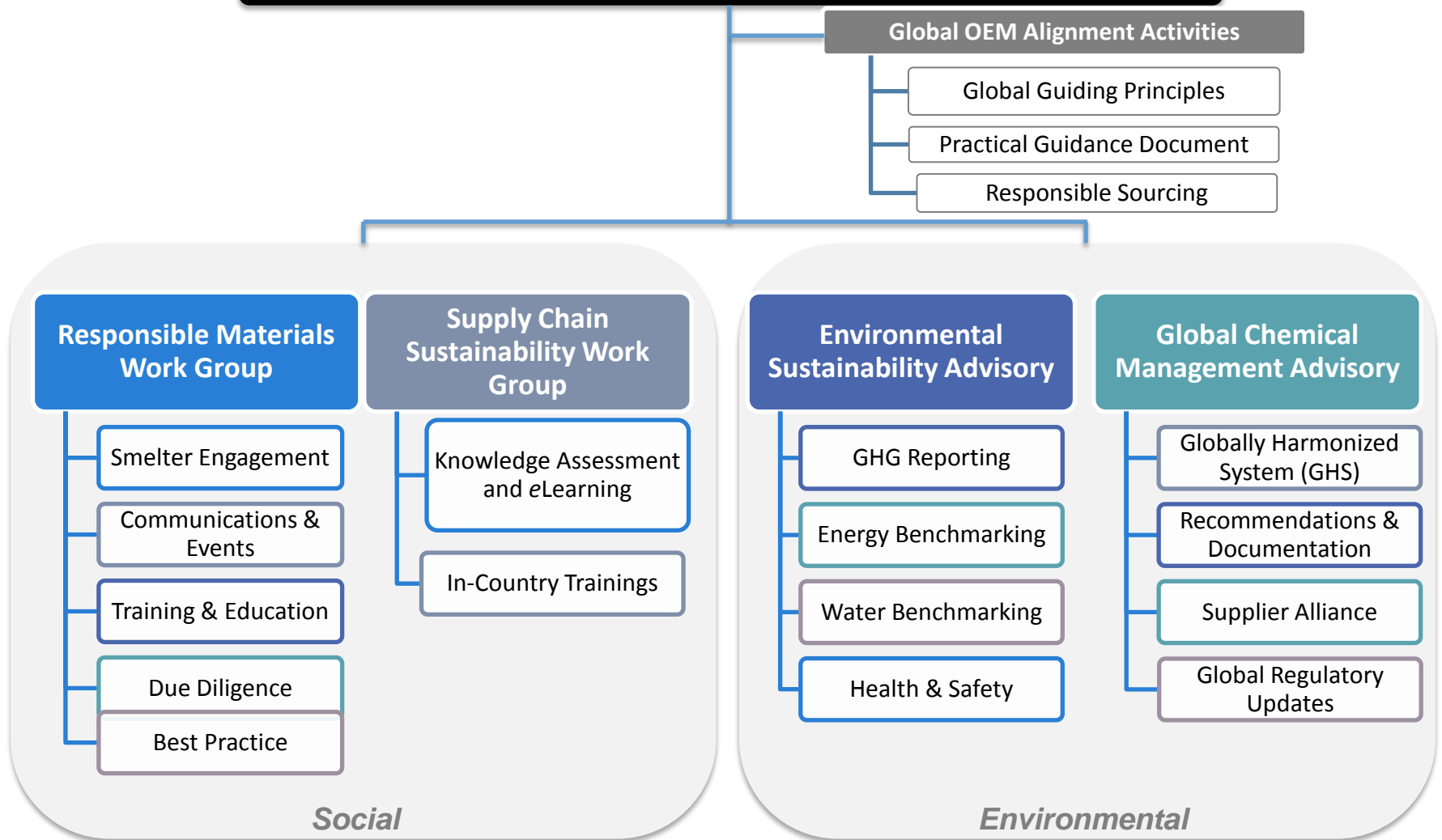


# Corporate Responsibility @ AIAG

## CORPORATE RESPONSIBILITY STEERING COMMITTEE



# Environmental

## Environmental Sustainability

Facilitates a common industry approach among members of the automotive industry to incorporate environmental sustainability throughout the supply chain—through the benchmarking of energy, water, and waste reduction or taking a more comprehensive approach to addressing sustainability at an industry level

- **Greenhouse Gas Workgroup** assists the supply chain with calculating and reporting GHG Emissions and to develop strategies to reduce carbon footprinting.
- **Water Benchmarking** assists with benchmarking water activities within manufacturing facilities and develops resources to reduce water usage.
- **Energy Benchmarking** establishes benchmarks to assist the supply base in reducing energy and implement renewable electricity in their manufacturing facilities.
- **Health & Safety Workgroup** is developing resources to reduce and eliminate fatalities and life-altering injuries at worksites and to improve current safety management systems.

## Global Chemical Management

Provides information and resources to keep the industry abreast of existing and emerging global regulations and provide an assessment of their impact. Give input into IMDS and have a direct connection to the IMDS Steering Committee

- **Global Harmonized System Workgroup** provides assistance in the development of GHS compliant SDS and labels within their organization and to monitor updates to GLAPS, GADSL, RoHS and REACH.

# Social

## Responsible Materials

Recently expanded to assist with raw materials sourcing beyond conflict minerals to comply with regulatory influences (US, EU, China, and others) *plus* non-legislated materials (e.g., cobalt, mica)

- **AIAG SET Team** conducts outreach encouraging smelters to participate in smelter audits.
- **Communication/Events** develops strategies for RMWG stakeholder outreach; identifies potential target audiences and communication opportunities (e.g., events, media, etc.)
- **Technical - Due Diligence** creates/supports initiatives to develop tools & resources to assist companies in their reporting processes
- **Industry Best Practices** recommends/drafts information to communicate common process for the industry
- **Training & Education** supports on-going efforts to create awareness of conflict minerals reporting, and the resources available to assist the supply chain

## Supply Chain Sustainability

A sponsored project addressing Sustainability education & training for the global supply chain

- Supply Chain Sustainability In-Country Trainings
- Supply Chain Sustainability eLearning
- Supply Chain Sustainability Knowledge Assessment

## CR Steering Committee

- Utilize relationships and member knowledge to identify Corporate Responsibility (CR) issues that impact the Automotive Industry and its supply chain. Provide one voice in response to expectations for how to address those issues.
- Provide education and information regarding the basic tenets of CR to the global supply chain.
- Minimize member efforts/redundancies across industry associations working on CR initiatives.